

STANNAH LIFTS LTD

**TECHNICAL BULLETIN****INFORMATION ONLY**

---

**For the Attention of :** Installers, Testers, Trade Customers, Training Dept,**Date :** 15/10/09**Product :** System 21 Traction Passenger Lifts**Subject :** Changes to Tension Device Mounting Arrangement.**Status :** Product Update - Information only**Pages :** 2

---

**Originator :** Stannah Lifts Ltd, Anton Mill, Andover, Hants SP10 2NX 01264 339090

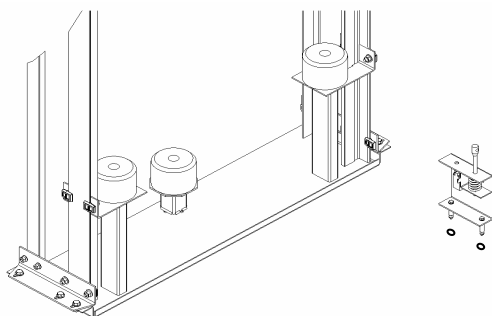
---

**Detail**

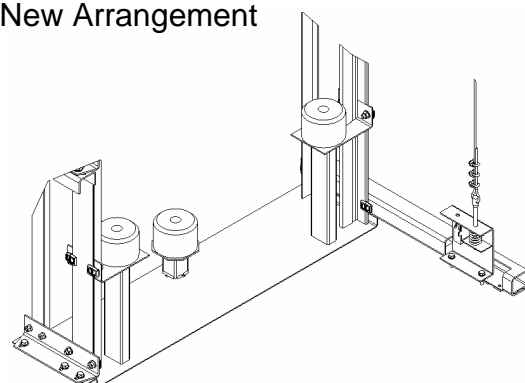
The mounting arrangement for the lower rope tension device has been modified to remove the need to drill the pit floor.

The new arrangement consists of a fabricated channel which clips to the car and counterweight guide rails. It is also secured to the guide baseplate, replacing the guide bracket angle (see below).

Old Arrangement

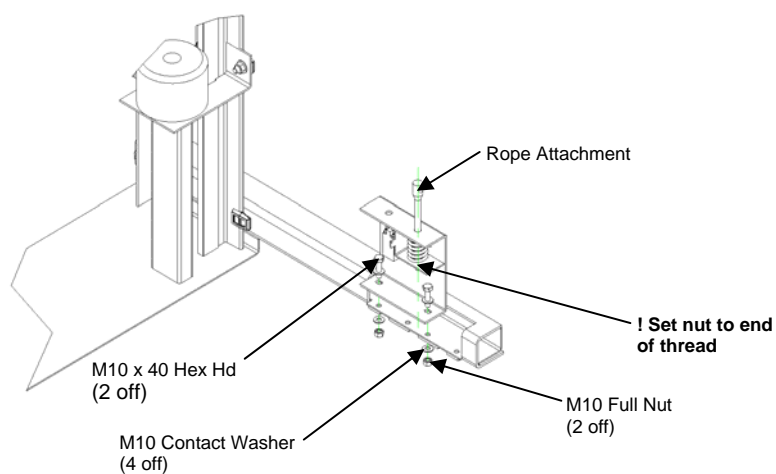


New Arrangement

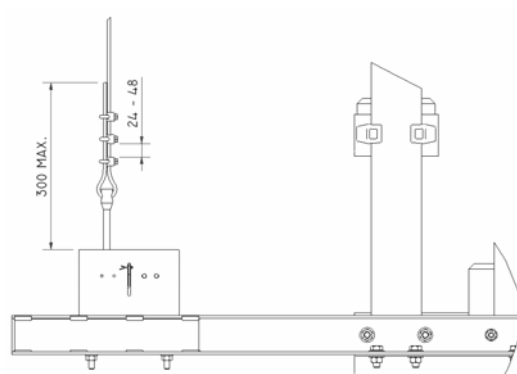
**Installation**

The fabricated channel should be positioned on the guide corresponding with the overspeed governor (i.e. the guide furthest from the entrance when entering the pit). It is secured using the same guide clips and fixings previously used to secure the guide bracket angle.

The lower tension device should now be mounted as shown below, ensuring that the rope attachment is central to the cut out in the channel.



When attaching the rope to the lower tension device, it is important to observe the following dimensions to ensure clearances are maintained when the lift has over-travelled the bottom floor.



This new arrangement applies to all traction drive passenger lifts manufactured from 28/09/09